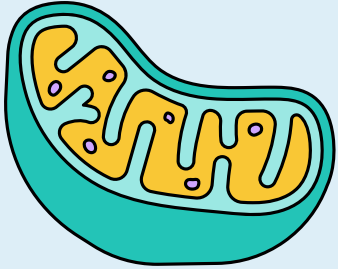
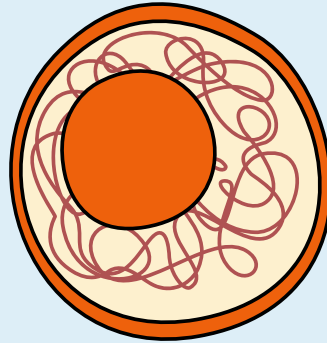


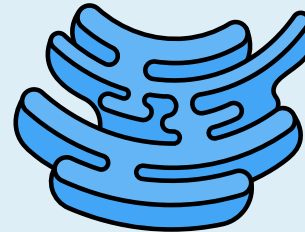
MITOCHONDRIA



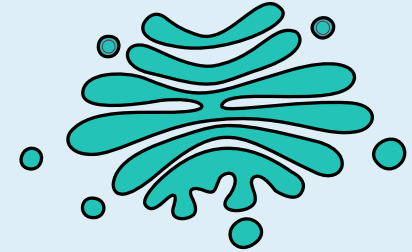
NUCLEUS



ENDOPLASMIC RETICULUM



GOLGI APPARATUS



Membrane bound organelle.

Chemical energy production (ATP - adenosine triphosphate).

Membrane bound organelle.

Contains genetic information (DNA) within chromosomes.

Membrane bound organelle.

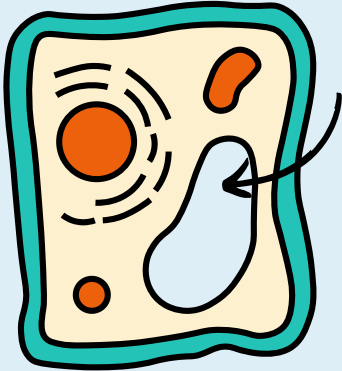
Rough:
Protein production.
Ribosomes present.

Smooth:
Lipid (fat) production.
No ribosomes.

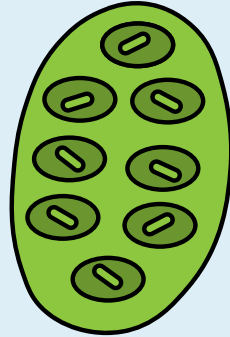
Membrane bound organelle.

Packages proteins & lipids (fats) into vesicles for transport.

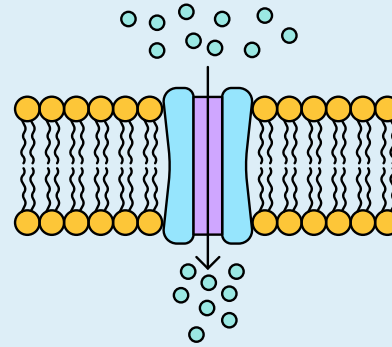
VACUOLE



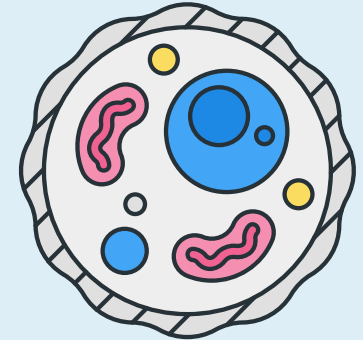
CHLOROPLAST



CELL MEMBRANE



ORGANELLE



Membrane bound organelle.

Supports cell storage and waste management.

Membrane bound organelle.

Site of photosynthesis in plant cells, where light energy is converted to chemical energy.

Provides cell protection.

Supports homeostasis by regulating materials entering/exiting the cell.

Sub-cellular structure that performs a specific function inside a cell.